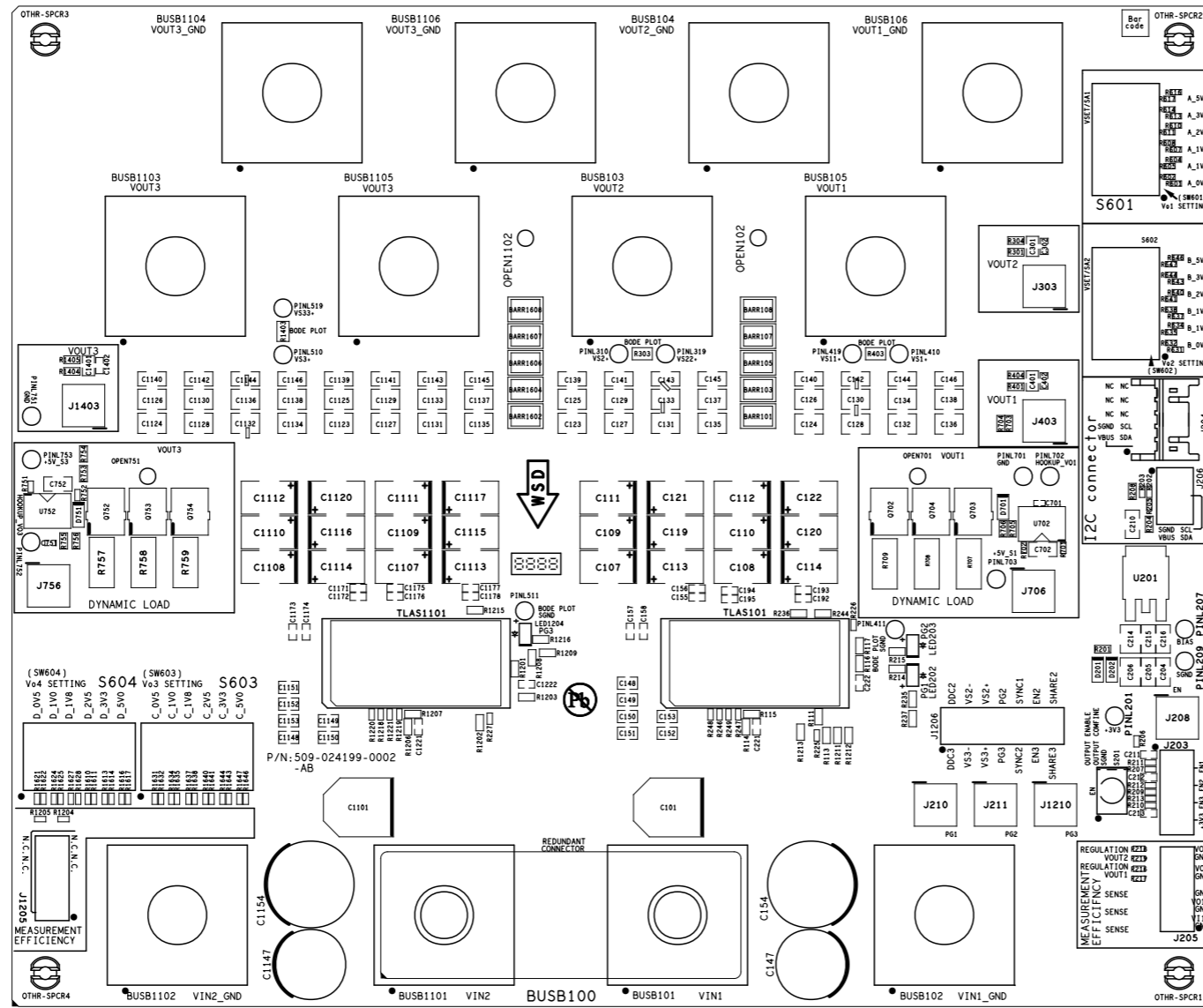


PROPRIETARY, CONFIDENTIAL and/or TRADE SECRET MATERIAL -- NOT OPEN TO PUBLIC. DO NOT SCAN, COPY OR DISTRIBUTE WITHOUT WRITTEN AUTHORIZATION FROM ADVANCED ENERGY INDUSTRIES, INC.  
 This document, and the information it contains, are the property of ADVANCED ENERGY INDUSTRIES, INC. and are protected by law. Both must be held in strictest confidence at all times.  
 No license or right to copy, use or disclose this document, or the information it contains, is granted either expressly or by implication.



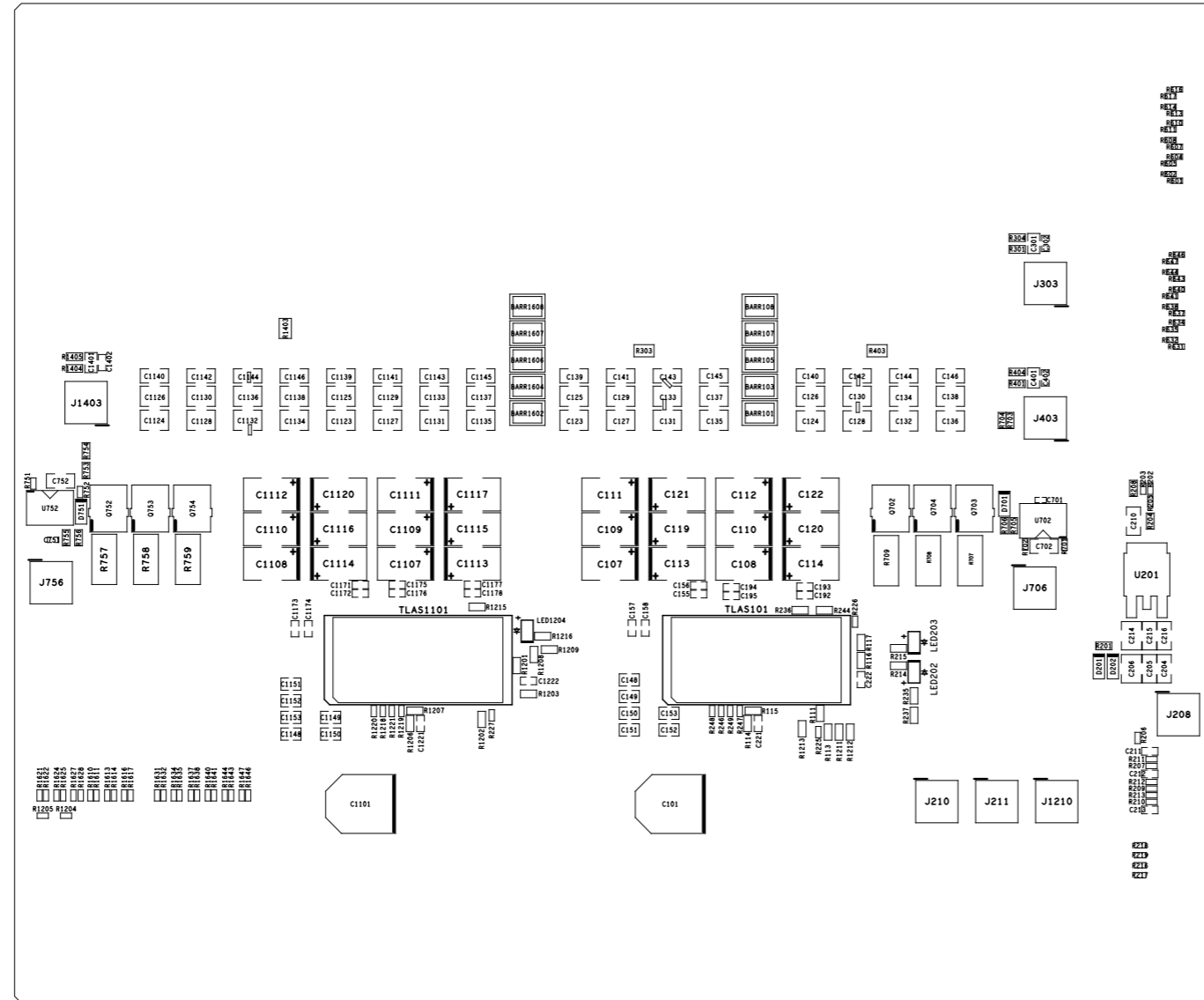
LOADING TEST BOARD  
 SILKSCREEN (COMP. SIDE)

NOTES:

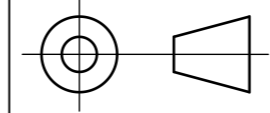

- COMPONENTS ASSEMBLING AND MAXIMUM LEAD TRIMS ARE PER ARTESYN WORKMANSHIP STANDARDS.

						Drawn to <b>ISO STANDARDS</b> Tolerancing <b>ISO 8015</b>	Unless Stated Otherwise General tolerances <b>ISO 2768-mK</b>			Units <b>LENGTH: mm</b> <b>ANGLE: DEG</b>	Scale <b>NTS</b>
						Material <b>N/A</b>	Treatment <b>N/A</b>				
						Created by <b>SC Wo</b>	Approved by <b>MAN LO</b>		Document type <b>ASSEMBLY</b>		
						Dept. <b>CNH</b>	Technical reference <b>SC WO/ALEX WONG</b>		Document status <b>RELEASED</b>		
						<b>ARTESYN™</b> Advanced Energy			Title, Supplementary title <b>LGA110D LOAD BD ASSEMBLY DRAWING (COMPONENT SIDE)</b>		
									709-024199-0002 Rev.   Date of issue   Lang.   Sheet <b>AB   2021-05-06   EN   1 of 5</b>		
<b>P/N SUFFIX</b>	<b>REVISION</b>	<b>ECO NO.</b>	<b>REVISION DESCRIPTION</b>	<b>DATE</b>	<b>REVISED BY</b>	<b>APPROVED BY</b>					
SHEET REVISION HISTORY											

PROPRIETARY, CONFIDENTIAL and/or TRADE SECRET MATERIAL -- NOT OPEN TO PUBLIC. DO NOT SCAN, COPY OR DISTRIBUTE WITHOUT WRITTEN AUTHORIZATION FROM ADVANCED ENERGY INDUSTRIES, INC.  
 This document, and the information it contains, are the property of ADVANCED ENERGY INDUSTRIES, INC. and are protected by law. Both must be held in strictest confidence at all times.  
 No license or right to copy, use or disclose this document, or the information it contains, is granted either expressly or by implication.

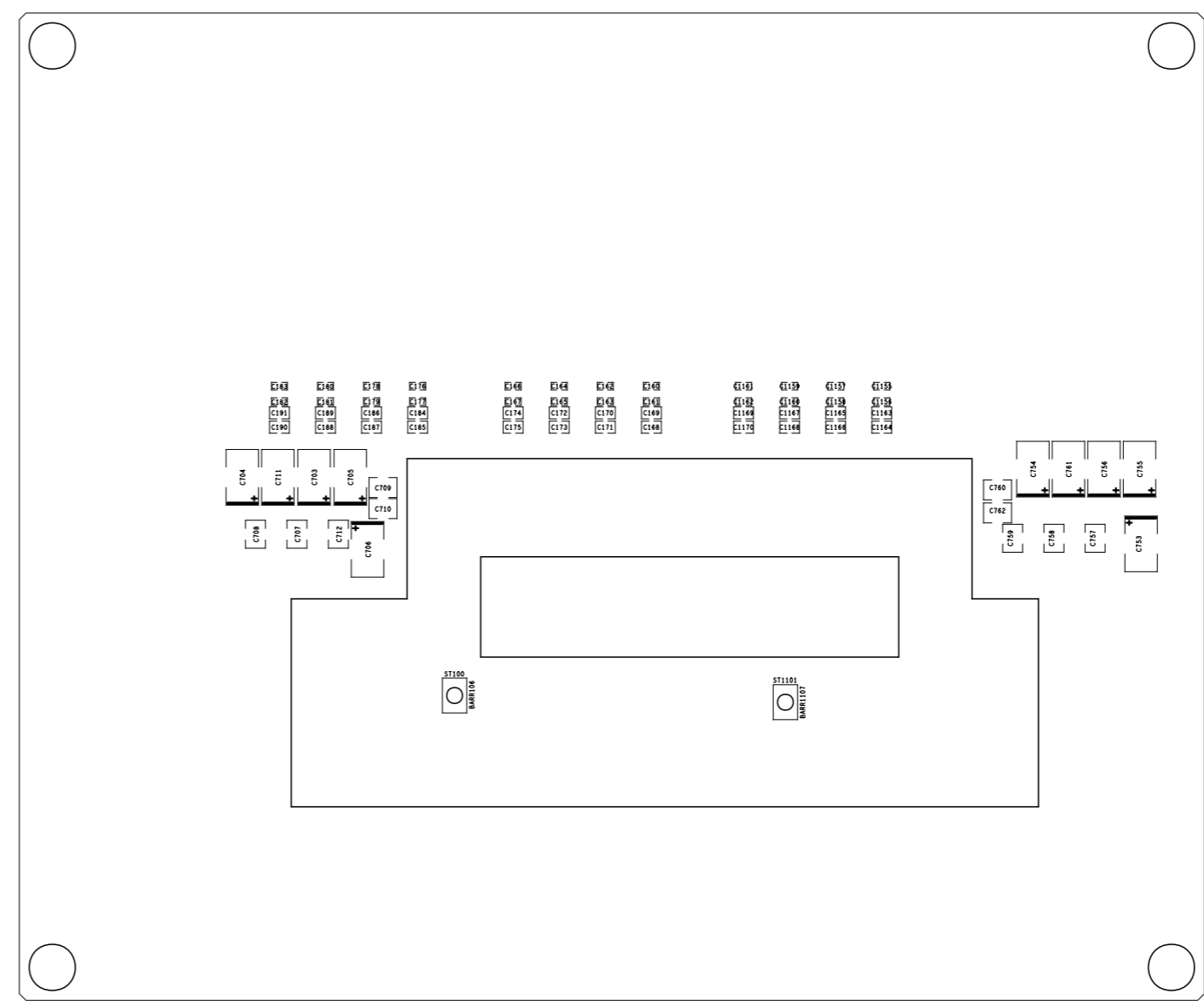


- NOTES:
1. EXPOSED VIA HOLES ON SOLDER PADS ARE ACCEPTABLE AFTER REFLOW SOLDERING.
  2. USE NITROGEN GAS FOR SMT REFLOW.

	Drawn to <b>ISO STANDARDS</b>	Unless Stated Otherwise			
	Tolerancing <b>ISO 8015</b>	General tolerances <b>ISO 2768-mK</b>	Units <b>LENGTH: mm</b> <b>ANGLE: DEG</b>	Scale <b>NTS</b>	
 <b>ARTESYN™</b> <small>Advanced Energy</small>	Dept. <b>CNH</b>	Technical reference <b>SC WO /ALEX WONG</b>	Document status <b>RELEASED</b>		
	Title, Supplementary title <b>LGA110D LOAD BD ASSEMBLY DRAWING</b> <b>( SMT , COMPONENT SIDE )</b>			<b>709-024199-0002</b>	
			Rev. <b>AB</b>	Date of issue <b>2021-05-06</b>	Lang. Sheet <b>EN 2 of 5</b>

PROPRIETARY, CONFIDENTIAL and/or TRADE SECRET MATERIAL -- NOT OPEN TO PUBLIC. DO NOT SCAN, COPY OR DISTRIBUTE WITHOUT WRITTEN AUTHORIZATION FROM ADVANCED ENERGY INDUSTRIES, INC.  
 ©2021 ADVANCED ENERGY INDUSTRIES, INC. ALL RIGHTS RESERVED  
 This document, and the information it contains, are the property of ADVANCED ENERGY INDUSTRIES, INC. and are protected by law. Both must be held in strictest confidence at all times.  
 No license or right to copy, use or disclose this document, or the information it contains, is granted either expressly or by implication.

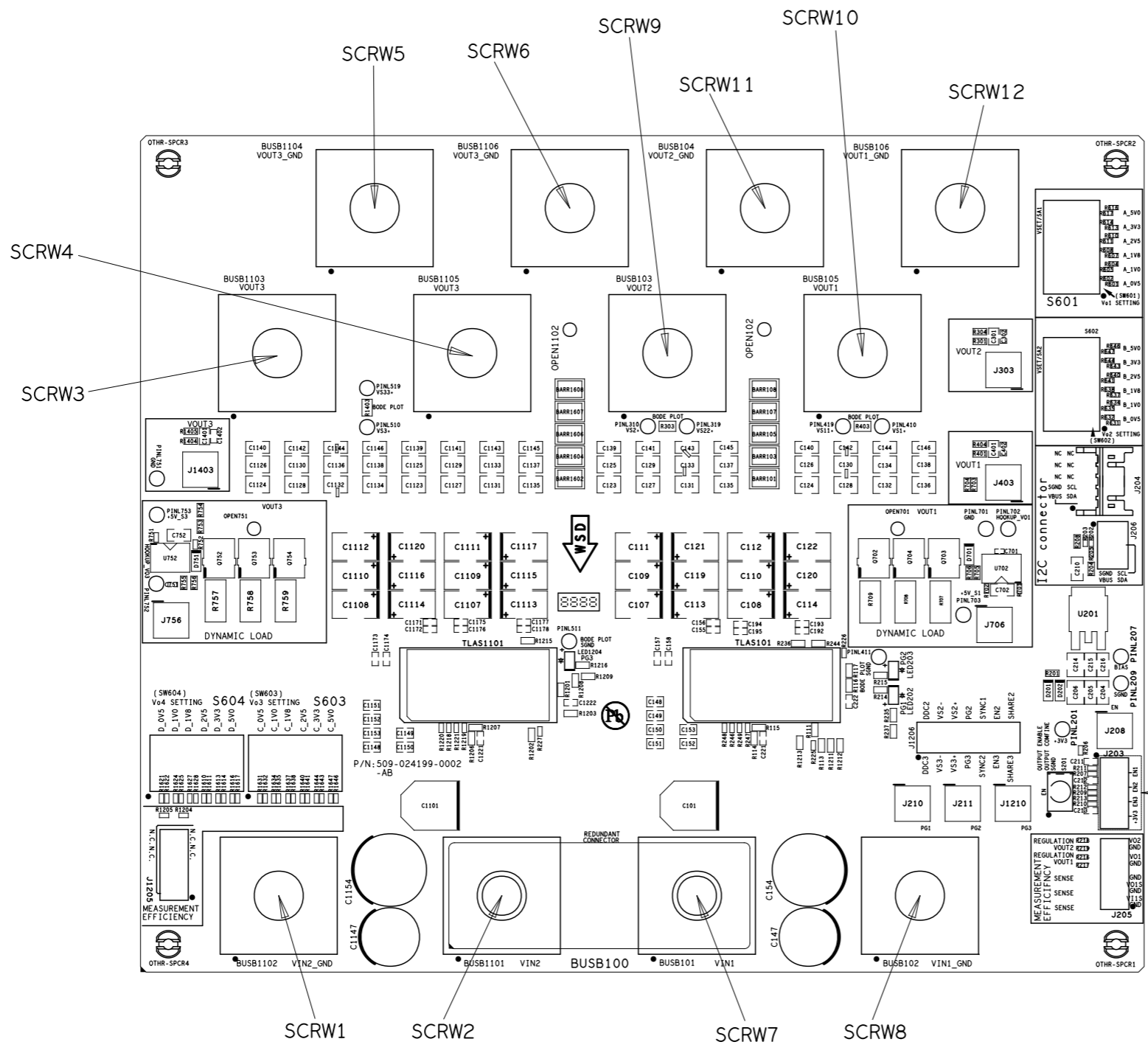
# LOADING TEST BOARD SILKSCREEN (SOLDER SIDE)



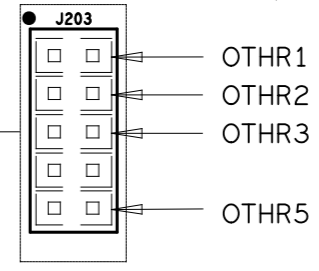
	Drawn to <b>ISO STANDARDS</b>	General tolerances <b>ISO 2768-mK</b>		Unless Stated Otherwise Units <b>LENGTH: mm</b> <b>ANGLE: DEG</b>		Scale <b>NTS</b>	
	Tolerancing <b>ISO 8015</b>						
<b>ARTESYN™</b> <small>Advanced Energy</small>	Dept. <b>CNH</b>	Technical reference <b>SC WO / ALEX WONG</b>		Document status <b>RELEASED</b>			
	Title, Supplementary title <b>LGA110D LOAD BD ASSEMBLY DRAWING (SOLDER SIDE)</b>				<b>709-024199-0002</b>		
	Rev. <b>AB</b>		Date of issue <b>2021-05-06</b>		Lang. <b>EN</b>	Sheet <b>3 of 5</b>	

PROPRIETARY, CONFIDENTIAL and/or TRADE SECRET MATERIAL -- NOT OPEN TO PUBLIC. DO NOT SCAN, COPY OR DISTRIBUTE WITHOUT WRITTEN AUTHORIZATION FROM ADVANCED ENERGY INDUSTRIES, INC.  
 © 2021 ADVANCED ENERGY INDUSTRIES, INC. ALL RIGHTS RESERVED.  
 This document, and the information it contains, are the property of ADVANCED ENERGY INDUSTRIES, INC. and are protected by law. Both must be held in strictest confidence at all times.  
 No license or right to copy, use or disclose this document, or the information it contains, is granted either expressly or by implication.

# LOADING TEST BOARD SILKSCREEN (COMP. SIDE)



VIEW FOR JUMPERS (REF. DESIG.:  
(OTHR1, OTHR2, OTHR3 & OTHER5)  
ASSEMBLED ON PIN HEADER  
(REF. DESIG.: J203):



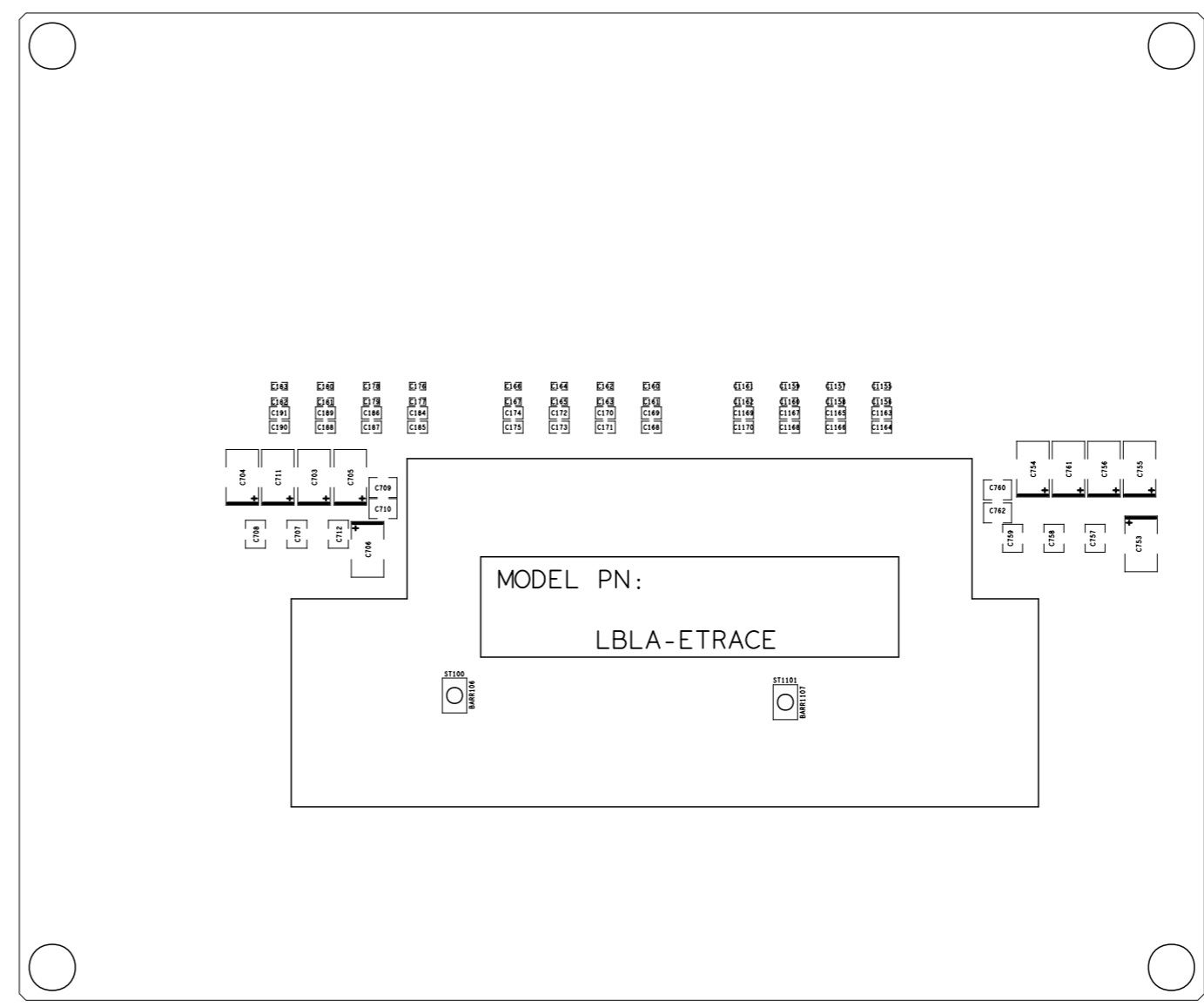
**NOTES:**

- 1) STANDARD ASSEMBLY SCREW TORQUE REQUIREMENTS SHOULD BE AS PER ARTESYN WORKMANSHIP STANDARD:  
FOR M6 SCREW: 8-10 kgf-cm
- 2) SETTING OF SCREWS 1-12, OTHR 1-4, LBLA-SW1061, LBLA-SW631 AND LBLA-SW601 FOR DIFFERENT MODELS PLEASE SEE TABLE 1.

	Drawn to <b>ISO STANDARDS</b> Tolerancing <b>ISO 8015</b>	General tolerances <b>ISO 2768-mK</b>		Unless Stated Otherwise Units <b>LENGTH: mm</b> <b>ANGLE: DEG</b>		Scale <b>NTS</b>
	<b>ARTESYN™</b> Advanced Energy	Dept. <b>CNH</b>	Technical reference <b>SC WO /ALEX WONG</b>	Document status <b>RELEASED</b>		
Title, Supplementary title <b>LGA110D LOAD BD ASSEMBLY DRAWING</b> (COMPONENT SIDE)			<b>709-024199-0002</b>			Rev.   Date of issue   Lang. Sheet <b>AB   2021-05-06   EN   4 of 5</b>
A3						

PROPRIETARY, CONFIDENTIAL and/or TRADE SECRET MATERIAL -- NOT OPEN TO PUBLIC. DO NOT SCAN, COPY OR DISTRIBUTE WITHOUT WRITTEN AUTHORIZATION FROM ADVANCED ENERGY INDUSTRIES, INC.  
 ©2021 ADVANCED ENERGY INDUSTRIES, INC. ALL RIGHTS RESERVED  
 This document, and the information it contains, are the property of ADVANCED ENERGY INDUSTRIES, INC. and are protected by law. Both must be held in strictest confidence at all times.  
 No license or right to copy, use or disclose this document, or the information it contains, is granted either expressly or by implication.

# LOADING TEST BOARD SILKSCREEN (SOLDER SIDE)



	Drawn to <b>ISO STANDARDS</b>	General tolerances <b>ISO 2768-mK</b>		Unless Stated Otherwise Units <b>LENGTH: mm</b> <b>ANGLE: DEG</b>		Scale <b>NTS</b>
	Tolerancing <b>ISO 8015</b>	Dept. <b>CNH</b>	Technical reference <b>SC WO / ALEX WONG</b>	Document status <b>RELEASED</b>		
	Title, Supplementary title <b>LGA110D LOAD BD ASSEMBLY DRAWING (SOLDER SIDE)</b>			<b>709-024199-0002</b>		
				Rev. <b>AB</b>	Date of issue <b>2021-05-06</b>	Lang. Sheet <b>EN 5 of 5</b>