



Product Service

# CERTIFICATE

No. Z2 15 07 13890 02248

**Holder of Certificate:** **Astec International Ltd.**  
 16th Floor, Lu Plaza, 2 Wing Yip Street  
 Kwun Tong  
 Kowloon  
 HONG KONG



**Certification Mark:**

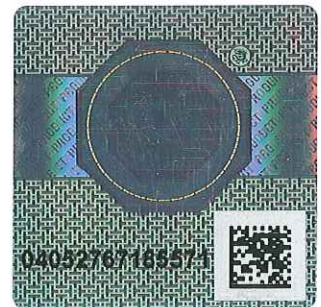


**Product:** **Switching power supply unit  
 (SWITCHING POWER SUPPLY)**

The product was tested on a voluntary basis and complies with the essential requirements. The certification mark shown above can be affixed on the product. It is not permitted to alter the certification mark in any way. In addition the certification holder must not transfer the certificate to third parties. See also notes overleaf.

**Test report no.:** 682701400603

**Valid until:** 2020-06-30



**Date,** 2015-07-02

( Jimmy Huang )

Page 1 of 3

**CERTIFICATE**

No. Z2 15 07 13890 02248

**Model(s):****LPS363-M-XXX, LPS364-M-XXX,  
LPS365-M-XXX, LPS366-M-XXX,  
LPS368-M-XXX****(where X can be any alphanumeric  
character, symbol or blank that represents  
customer identity that do not affect safety)****Parameters:**

Rated Input :	100-240VAC, 5.5A, 50/60Hz or 120-300VDC, 5.5A
Rated Output :	+12VDC, 30A MAX; +12VDC FAN, 1A MAX; +5Vsb, 2A MAX [LPS363-M-XXX] +15VDC, 24A MAX; +12VDC FAN, 1A MAX; +5Vsb, 2A MAX [LPS364-M-XXX] +24VDC, 15A MAX; +12VDC FAN, 1A MAX; +5Vsb, 2A MAX [LPS365-M-XXX] +48VDC, 7.5A MAX; +12VDC FAN, 1A MAX; +5Vsb, 2A MAX [LPS368-M-XXX] +30.6 - +36V, 11.25A MAX; +12V FAN, 1A MAX; +5Vsb, 2A MAX [LPS366-M-XXX] For all above models: MAXIMUM TOTAL OUTPUT POWER: 200W CONVECTION COOLING 360W FORCED AIR COOLING
Construction :	Built-in
Protection Class :	Built-in component, consider in end system
Degree of Protection :	IPX0
Remarks :	See page 3 for details

**Tested  
according to:**EN 60601-1:2006/A1:2013  
EN 60950-1:2006/A2:2013**Production  
Facility(ies):**

62777, 41329, 26247, 28532

**CERTIFICATE**  
**No. Z2 15 07 13890 02248**

Product Service

1. When installing these equipments, all requirements of mentioned standard must be fulfilled.
2. Refer to the installation and operating instruction from manufacturer for the details of loading condition, cooling condition and operating temperature.
3. Clearance was evaluated for operating altitude up to 5000m above sea level.
4. These power supplies contain output exceeding 240VA, when installing into end system, care must be taken that the output and associated wire(s) may not be touched.
5. Built-in type equipment, suitable enclosure should be provided in end system.
6. These power supplies have been evaluated according to EN60601-1/A1: 2013 with the following conditions:
  - The output was not evaluated as patient connected circuits.
  - Compliance with the requirements for EMC shall be evaluated for the end use product.
  - These products have been investigated only as a component part for use in equipment where the suitability of the combination is subject to end product investigation.
  - These power supplies must be installed in accordance with the instruction manual.
  - When these power supplies installed in the Class I application: Earthing connection and continuity test shall be checked in end product.
  - The leakage current test shall be checked in end product.
  - The risk management requirements of the standard were not addressed.
  - Clearance was evaluated for operating altitude up to 3000m above sea level.
  - Clearance/creepage distance and electric strength were evaluated and fulfilled the requirements for MOPP.

Page 3 of 3